



INTERMOUNTAIN THERAPY ANIMALS *Quarterly*

# NEWS

SPRING 2015

VOLUME XXI • No. 1

SOMETIMES THE BEST  
MEDICINE IS ...  
A HORSE



Inside:

**5-year-old Leeanna meets Bold at the University of Utah's Burn ICU (see p. 3)**

## Who are Intermountain Therapy Animals?

We are a human service organization, a 501(c)(3) nonprofit, headquartered in Utah, that brings the gifts of animal companionship and interaction to people in need. Our mission is to **enhance quality of life through the human/animal bond**. Our volunteers (people and their own pets) make regular visits to those who are physically or developmentally disabled, emotionally or psychologically impaired, lonely or suffering from depression. All services are free of charge to both client and facility.

ITA therapy animals and their handlers are screened, trained, licensed and insured to participate in animal-assisted interactions (AAI), which range from casual and informal to rigorous, goal-driven aspects of formal therapies. Successful teams have completed both health and temperament screening and volunteer training.

Serving our communities since 1993, we are one of the largest groups of our kind in the United States, with more than 350 volunteer teams visiting at more than 150 hospitals, counseling centers, nursing facilities, detention homes, extended care centers, and schools. Chapters of ITA now thrive in Montana, Idaho, and Kentucky.

We are also the founders of Reading Education Assistance Dogs® (R.E.A.D.®), a literacy support program to foster in children the love of books and the reading environment. R.E.A.D. has spread throughout the United States and beyond since we launched it in 1999.

If you would like more information about us and our work, please contact Executive Director Kathy Klotz at 801-272-3439. We welcome all who want to lend a helping paw! ♥





**Intermountain Therapy Animals**  
 4050 South 2700 East, Salt Lake City, Utah 84124  
 (or) P.O. Box 17201, Salt Lake City, Utah 84117  
 Tel 801-272-3439 • Fax 801-272-3470  
 Toll-free 877-485-1121 • e-mail: ita@therapyanimals.org  
[www.therapyanimals.org](http://www.therapyanimals.org)

We're a  
**Favorite  
 place  
 on Google**



### ITA Staff

**Executive Director :** Kathy Klotz (H) 801-277-8271  
**Asst. Director / ITA R.E.A.D.® Coordinator :** Karen Burns  
**Program Services & Volunteer Coordinator :** Colleen Baum  
**National R.E.A.D.® Coordinator :** Sharry Buhanan-Decker  
**Administrative Services :** Melissa Byrd  
**Office Manager :** Cindy Harris  
**Special Projects :** Tory Keuffel  
**Newsletter Editor :** Kathy Klotz  
**No. Utah Coordinator :** Judy Curtin  
**Utah Valley Coordinator :** Brett Beasley  
**Cache Valley Coordinator :** Diana Toth  
**Montana Coordinator :** Nancy Rosen  
**Montana (Helena area) Coordinator :** CJ Puotinen  
**Idaho Coordinator :** Connie Sharkey



Find ITA at:  
[www.facebook.com/  
 Intermountain.Therapy.Animals](http://www.facebook.com/Intermountain.Therapy.Animals)  
 Find R.E.A.D. at:  
[www.facebook.com/  
 ReadingEducationAssistanceDogs](http://www.facebook.com/ReadingEducationAssistanceDogs)

Intermountain Therapy Animals' *NEWS* is sent to all members and contributors. Please call the ITA office at 801-272-3439 if you would like to receive it, whether by mail or e-mail.

## Board of Directors

**Jane Fischer (Board President)**  
 CEO, Pampered Pets of Utah

**Chris Beck-McKay**  
 Restaurateur

**Peggy Chudd (Board Vice President)**  
 ITA Team Volunteer

**Mindy L. Cox (Board Treasurer)**  
 Controller, McKay Management

**Susan Daynes**  
 CEO, Coach Mike's Tennis Shop  
 ITA Team Volunteer

**Karen Duncan, MSN, RN**  
 Community Volunteer

**Lynne Hanson**  
 Sales Executive (Retired) / ITA Team Volunteer

**Heather King (Board Secretary)**  
 Public Relations, Spectrum Engineers

**Tricia Sullivan, CSW**  
 Clinical Social Worker, Salt Lake Marriage and  
 Family Therapy Clinic & St. Mark's Hospital

**Volunteer Member Representatives  
 (non-voting)**  
**Eileen Ambrose**  
**Erika Daines**

## Advisory Board

**Gary Bates**, 19th Special Forces, Utah National Guard

**Jan Bates**, Director, Community Affairs, Questar (Retired)

**Penny S. Brooke, RN, MS, JD**, College of Nursing, University of Utah (Retired)

**LuEllen Brown**, Social Worker, Mountain Ridge Counseling Center, Brigham City

**Pamela K. Faler, M.A., M.F.T., P.C.**, Marriage & Family Counselor

**Laura Moseley Helm**, Physician Assistant

**Mary Renck Jalongo, PhD**, Professor Early Childhood Education, Indiana University of Pennsylvania

**James J. Lynch, PhD**, Author and Researcher

**Stephanie Magid**, Vice President, Goldman Sachs

**Sandi Martin, RN, BSN, NCBF**, Oakwood Health Care, Michigan

**Susan McDonald, DVM**, Animal Health & Nutrition

**Kay Miller**, Pastoral Care, ITA Volunteer

**Sven N. Miller**, Service Quality Leader, American Express

**David A. Parker, Ed.D.**, Cultural Education

© Intermountain Therapy Animals 2015.

**O**N DECEMBER 14, 2014, AT HER HOME IN OAKLEY, IDAHO, 5-year-old Leeanna received 2nd and 3rd degree burns over 60% of her body in an accident with the family's wood-burning stove. She was flown to the University of Utah burn center in critical condition.

In February, she was starting to struggle with her physical therapy—the burns are painful and the healing process is long. She will be in the hospital for several months.

Leeanna has always loved horses and riding. Her grandmother, Lori Kreider, contacted ITA to see if we might bring a miniature horse to visit Lee to inspire her to get strong enough to ride and take care of her own horse again.

Sally Shields and her ITA partner Bold were happy to respond to this request. Sally says, "Needless to say, Bold tends to draw attention, and we said hello to several employees before our visit with Lee got started. As Bold and I watched her approach—all wrapped in blankets and being pulled in a wagon outside onto the lawn for this special occasion—I could feel Bold start to pay attention.

"We made introductions and I brought Bold around to the side of the wagon, near enough for Lee to touch him. I am always amazed as I watch him start to engage, calmly touching her shoulder and cheek with his muzzle and gently 'blowing' on her face. After they got acquainted and comfortable with one another, Lee's eyes started to close and she and Bold took a short snooze together. He stood there 'napping' without moving a foot.

"I could see how much it meant to mom for her daughter to have this opportunity to visit with a horse, albeit one that is quite a bit smaller

than her horse friends at home. Mom asked several questions and enjoyed learning about mini's and having a chance to talk 'horse stuff' with another horse lover. She shared with me how much Lee loves all animals and misses being around them. I remarked to mom that her daughter's beautiful brown eyes matched Bold's big, brown, kind eyes.

"Bold was happy to pose for pictures with several staff members, too. It's hard to describe how good he is at his job, and I feel so fortunate to be able to watch him engage with people and see their reactions.

"It was the most amazing experience I have yet had volunteering with Bold, to see how brightly Lee lit up when he came to her side."

Sally & Bold are continuing to visit with Lee, and everyone hopes she might be able to go home in time for her 6th birthday, coming up in May.

Thanks to Leeanna and her family for letting us share her story. ♥



ABOVE: Leeanna before her accident. MIDDLE BELOW: Lee meets Bold. BOTTOM: Lee was taken from the burn ICU in a wagon, outdoors on the lawn for her visit with Bold.



## From ITA's Board Chair

*Dear Friends,*

I am honored to serve as ITA's new Board President, and am fully committed to continuing the most remarkable 21-year journey of Intermountain Therapy Animals. I would personally like to thank Susan Daynes for her seven years serving as our Board president, and wish her all the best in her continued participation on the Board and her tireless work as a well-respected team volunteer with Diva.

I have served on the Board as Treasurer for the past two years, and was on the Board previously from 2003-2005. During my years with ITA, I have continued to learn and love more about this organization every single day!

Although I do not have a therapy animal of my own, my love for animals began at least 60 years ago and has never wavered. I adopted my 12-year-old Border Collie, Charlie, 10 years ago after he was found with bullets in his jaw and shoulder and another which still exists in his shoulder. He has been my greatest ambassador and has been by my side in my capacity as the owner of Pampered Pets of Utah, LLC.

I have a passion for the work that all of our teams accomplish on a daily basis. I can never sing enough praises for all

they do and all the lives they have changed and enhanced through animal-assisted therapy. I thank them from the bottom of my heart.

No matter what crises are going on in the world around us, individual people of all ages and socio-economic circumstances receive devastating diagnoses and injuries every day. Our teams are there to help them re-kindle their hope and enthusiasm for life, inspiring them to move forward on the tough path to healing. Our therapists tell us over and over, year after year, that the animals inspire cooperation, participation and progress that they cannot otherwise get from their patients. And we are good medicine for families and staff, as well.

Now in our 22nd year, ITA is one of the most successful organizations of our kind. But it's a constant challenge, as for all charities big and small, to keep providing these crucial services during these challenging economic times. If you believe in the power of the human-animal bond, we ask for your help to continue helping our patient/clients in over 150 healthcare facilities to heal. Please do all you can to make room for ITA in your budget and your heart.



Jane and Charlie

Investing in animal-assisted therapy is a guaranteed Return on Investment—it succeeds every time!

As I begin my term as Board President, I am hoping tht ITA can count on your support. We need you now more than ever, so that we can continue to serve thousands of people in our community every year!

With my most sincere thanks,

*Jane Fischer*

ITA Board President

You may be able to make your donation to ITA go twice as far. Check to see if your employer will match your contributions.

**2x**

Intermountain Therapy Animals (#76194) participates in the Combined Federal Campaign, making it possible for all federal employees to donate to us through their workplace payroll deduction plans.



## Join Intermountain Therapy Animals —With or Without Your Pet

**Yes!**

I will help ITA teams continue to bless the lives of so many who need them. Here is my tax-deductible gift:

- \$25 Friend  \$50 Supporter  \$100 Partner  \$250 Advocate  
 \$500 Patron  \$1,000 Benefactor  \$5,000 The 4-Paw Circle

Name \_\_\_\_\_ Phone \_\_\_\_\_

Address \_\_\_\_\_

City / State / Zip \_\_\_\_\_

E-Mail \_\_\_\_\_

CHECK ENCLOSED  CHARGE:  AMERICAN EXPRESS  DISCOVER  MC  VISA

CARD # \_\_\_\_\_

EXP. DATE \_\_\_\_/\_\_\_\_ SECURITY CODE \_\_\_\_\_

SIGNATURE \_\_\_\_\_

Please send to Intermountain Therapy Animals:

4050 SOUTH 2700 EAST, SALT LAKE CIT, UT 84124 (or) PO BOX 17201, SALT LAKE CITY, UT 84117

Your donations are tax-deductible to the full extent of the law. Thanks for your support!

# About Both Ends of the Leash

## April Hollingsworth & Piggy

**Salt Lake City, Utah**

(ED. NOTE: First published in *Pets in the City Magazine*, November 2014. Reprinted with permission.)

### My Tribute to Piggy

It's been over nine months since I lost Piggy to cancer. I have spent most of the year grieving a loss I never imagined. For all the loving people and animals I have had in my life, only one was by my side every second of every day—and always with a smile. I was wholly unprepared to be alone in all those everyday moments that she made magical—even late nights at the office. So, the grief has been paralyzing. But Thanksgiving is coming, and I am so grateful for the time we had together that it seems the appropriate time to give thanks.

For those who did not know her, Piggy/PiggyLou/PiggyPie/Piglet/Pigster was a gorgeous brown pit bull mix who I met at the South Salt Lake Animal Shelter in the spring of 2005 while looking for my lost cat. She smiled at me, and just like

that she had my heart. As time went on, I would do anything for that smile. Lucky for her.

Piggy was wild and spirited and mischievous, and she never met a stranger. She was constantly escaping from the yard and running near and far to make new friends. I got calls from nearby soccer fields that she had joined the game, and from Grand America where she made bellmen swoon.

In all her charming exuberance, she was an accident waiting to happen. On November 30, 2006, Piggy bolted across our dark, busy, slushy road. The car that hit her didn't stop, but many people did and helped get her to the vet. Lucky for me.

The first time I saw her after the accident, her paralyzed back end looked as surreal as a melted clock in a Dali



painting. They said her spinal cord was nearly severed. I was heartbroken, but Piggy didn't skip a beat. She wanted to live and to chase that blue ball she loved! So we got her a cart, and she took off like a shot. Lucky for both of us.

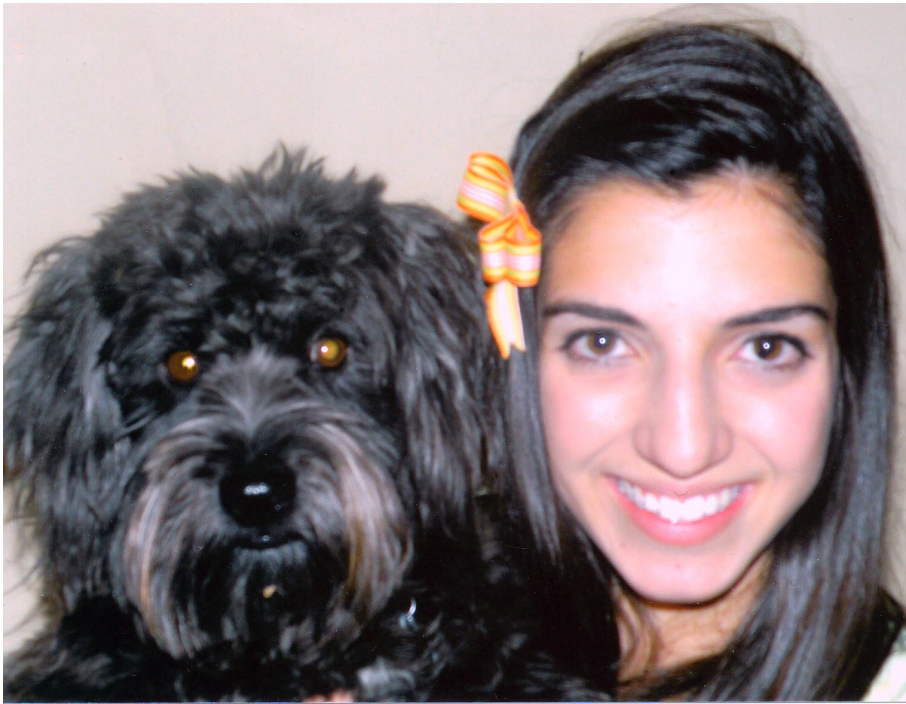
That accident would turn out to be the most amazing thing to happen to us. Piggy might have lived her life as just a crazy dog. I might have just been the mom of a crazy dog. Instead, she became an inspiration—to disabled and able-bodied people and dogs everywhere. She became a therapy dog with ITA and brought smiles to kids in the hospital. She lit up the dog park and the world just by chasing a blue ball in her magic cart. There has never been a creature more full of joy. And the wheels made everyone notice.

Despite the hole in my heart, I feel like I won some kind of life lottery to have been lucky enough to be picked by a smiling dog in a cage to be her partner in such an unexpected and fantastic journey. Thank you, Pig, for the love, for the joy, for the beautiful adventure. You made my life. ♥

*Piggy at Shriner's Hospital, where how she dealt with her own disability was an inspiration to the children.*



# About Both Ends of the Leash (cont.)



## Christine Rogers & Wiley

**Bozeman, Montana**

(ED. NOTE: Christine Rogers is a senior at Bozeman Senior High School and an ITA volunteer team with Wiley. This is her college essay that she believes helped her to get into Vanderbilt University in Nashville.)



**UNC PROFESSOR BARBARA FREDRICKSON, an expert in positive emotions, has defined love as “micro-moments of connection between people, even strangers.” Tell us about a time when you experienced a “micro-moment of connection.” What did you learn?**

### Connection

Frank Sinatra welcomes me as I enter the cramped, stuffy building. The rooms are hot and there are gaping mouths of sleepers in every corner. Visiting the memory care clinic in the senior community has become a regular Sunday routine. My dog Wiley and I, together a registered animal therapy team, come to share happiness with people who are often missing pets of their own. This community has become a place of comfort for me, and I never cease to be excited to visit. My visits are defined by micro-moments of connection, and although the moments are fleeting and often forgotten, I'm still deeply affected by them.

Stories swirl around me the moment I enter the lobby. There's Tom, an ex-dentist and perennial flirt; Lois, my second shadow who follows me with her hands in her overalls; and Pat, who slaps my hand if my nails are not perfectly painted. With such an array of personalities, it would be easy for a shy person to hang back in the shadows. But Bonnie is not like any shy person I've met before.

White hair, hunched shoulders, and a smile as large as Montana, Bonnie calls me over as she reaches out to pet Wiley. She can't remember her birthday, what state she lives in, or even the name of her grandson. However, no matter how hard I search, it's impossible find any frustration in her. Bonnie exudes love, and when she pets Wiley and looks into my eyes with a deep appreciation, I can't help but feel it too. She asks my name and leads into a story of her childhood, often repeating scenes but changing the outcomes. She has no distraught look when she tells me she can't remember, but instead seems satisfied, knowing she has the power to control her life. Then she turns the topic to me. She doesn't question me the way most people do just to be polite, but instead asks me to open up. She challenges me to let her in, and I do.

As the clock ticks, Wiley begins to get antsy and hints for a bathroom break. I excuse myself and we walk outside. As I wait for Wiley to finish, I think more about Bonnie and the connection between us. With her, I feel centered and grounded. Our time together teaches me to be present and savor the moment – because with Bonnie, the moment is even more powerful and more elusive than ever. The moment is all Bonnie has.

When Wiley looks up at me to show he has finished, we eagerly reenter the building. I find Bonnie again and apologize for my absence. She smiles and praises me for raising such an adorable dog. Then she looks up into my eyes, as if trying to find a missing object, and asks the simple, cutting question:

“Who are you?” ♥

# About Both Ends of the Leash (cont.)

## Margaret Rostkowski & Jamie

Ogden, Utah

This is a small story, about a moment in time, but one that I will remember.

Jesus was fifteen, tall, about 5'8", dark hair and eyes. He had the mental age of a two-month-old. He was wrapped into his chair, straps across his chest and his waist, because he had no core muscle development. His hands fell open, limp. His mouth hung open and he made sounds. He did laugh. We could tell when he laughed.

On my arrival with Jamie at this special needs class, I always walk from student to student, to teacher to teacher aide, greeting each, letting Jamie greet each and giving them time to pat and hug her. She loves it. Tail wagging, mouth open and smiling, eyes soft and alert, she is the picture of a therapy dog. We even greet Mike, or I do, since he does not care for Jamie. He and I always exchange fist bumps.

At first, I took Jamie to Jesus in his chair, had her sit, and lifted his nearest hand and put it on Jamie's head. I always spoke. "Hi, Jesus. This is Jamie."

He looked at me, not at Jamie, he never smiled. Mary, the teacher, told me he didn't even smile when his mother arrived to take him home.

After several times of this, I sensed that this made Jamie uncomfortable, so I always spoke to Jesus and patted his arm, but I didn't force the interaction with Jamie. I try to follow the ITA mandate to be sensitive always to my animal's needs, and I didn't want this exchange to be uncomfortable for her.

Several weeks later, after Tom, Sam, Katie and Miguel had each hidden a dog biscuit for Jamie to find, and Mike and I had had another fist bump, after we had made the rounds a second time to say goodbye and get a last pat or hug, we

were leaving. Outside the classroom in the hall, we met Jesus. Pat, the physical therapist, was pushing his chair and I stopped to talk. As we lingered, Jamie moved from my side, approached Jesus, and laid her head in his lap. Pat and I stood and watched. No one spoke.

She did not move. She stayed. And then Jesus lifted his right hand and put it on top of her head. After several moments, he lifted his hand away, Jamie backed up and we left. I had never seen Jesus make a voluntary movement before, never seen him move his hands in a purposeful way. Until today.

Sue Birkenshaw, a friend who taught multiply-disabled students for years, was stunned by this story. She said that Jesus must have made some connection in his brain. Perhaps he had some memory of the feeling of Jamie's fur from the times before. She said this was an enormous step for him.

The next time we came to visit, I brought Jamie to the side of Jesus' chair and he did not look at her or reach out to her. He was as he had been before. Then he became ill and did not return to school. I have not seen him for three months.



I am left with questions.

Why did Jamie move to Jesus? Why did she put her head in his lap and stay there for such a long moment?

Why did he touch her?

What happened in those two minds, so very unlike, that brought them together?

Did he remember what that warm soft fur felt like from the times I placed his hand on her head?

This memory fills me with humility, an awareness of so much that I do not know and cannot understand about both boy



and dog, about how our minds work, how connections are formed. I want to know more.

A friend has suggested that this story is all about trust. Those of us who do this work with our dogs have to trust that they can handle tough situations, can be around vulnerable people like Jesus. We take classes and pass tests together to establish and to ensure this trust.

But Jamie too has trust. In me, that she is safe at my side, always. In this boy, that she can reach out to him and be safe. Perhaps he too, for a moment, knew he could trust something in his world, and he found something he could choose to touch.

That is what I remember from this moment. Two beings, both without words, both vulnerable in a world that could hurt them both, connected in an intimate way. I think, from all signs, that for a moment, they reached out to another in an acknowledgement of the other—simply, and beautifully, as living beings.

—Margaret Rostkowski

# ITA's Donors & Supporters 2014-15

Thank you! ITA is committed to promoting and enhancing the human-animal bond, and we could not do it without the generous donors who are making all our accomplishments possible. Following are all gifts received from January 1, 2014 through March 2015.

## INDIVIDUAL, CORPORATE & FOUNDATION DONORS

### \$10,000 to \$30,000+

ANONYMOUS Foundation  
ANONYMOUS Organization  
Murat Beyazit  
Stephen & Mary Birch Foundation  
Cross Charitable Foundation  
George & Dolores Doré Eccles Foundation  
Richard K. and Shirley S. Hemingway Foundation  
Emma Eccles Jones Foundation  
Laura J. Niles Foundation  
Lynne S. Sherman Estate  
Pia & Jimmy Zankel (R.E.A.D.)

### \$5,000 to \$9,999

Community Shares/Utah  
Lawrence T. & Janet T. Dee Foundation  
Larry H. Miller Charities  
Willard L. Eccles Foundation  
Lynne Hanson & Terry Hines  
The Estate of Lillian D. Worth

### \$1,000 to \$4,999

American Express Employees for "1,000 Wishes"  
ANONYMOUS (2)  
Barnes & Noble (R.E.A.D.)  
Barnes & Noble/Sugarhouse  
Chris Beck-McKay  
Cindy & Mike Bender  
Laura & Robert Bridges, CeCe & Gabby  
Castle Foundation  
Peg Chudd Cleaning Services  
Reeve Chudd & Marian Mann  
Ann Coleman  
Erika Daines  
Susan & Skip Daynes  
Stephen G. & Susan E. Denkers Family Foundation  
The Jarvis & Constance Doctorow Family Foundation  
Pace Erickson  
Henry W. & Leslie M. Eskuche Foundation  
Fraternal Order of Eagles  
Freebirds World Burrito  
Sterling & Shelli Gardner Foundation  
Intermountain Healthcare  
Community Partner Fund  
Intermountain Healthcare (for Primary Children's Hospital)  
Jen & Tom Kesteloot

Kathy Klotz  
Masonic Foundation of Utah  
Molina Healthcare  
Mountain Express Magazine  
Stephanie Pappas & Kristen Dalzen  
Pappas Builders Supply  
Roofers Supply  
Alfred & Frances Ross Foundation  
Salt Lake City Rotary Foundation  
Salt Lake County  
JEPS Foundation/Jennifer Speers  
Lori & John Stockinger  
University of Utah  
Utah Families Foundation  
Utah Medical Association  
Foundation  
Vera & Bruce Wood

### \$500 to \$999

All Saints Episcopal Church, SLC  
ANONYMOUS (3)  
Nancy & Jim Barthelme  
Carolyn W. & Charles T. Beaird Family Foundation—Candy Beaird (R.E.A.D.)  
Paulette Bethel  
BMW Bank of America  
Nancy Brooks (R.E.A.D.)  
Alexis Butler/The Dog's Meow  
Robert S. Carter Foundation  
Chico's at Fashion Place/SLC  
Peggy Chudd  
Connie & Mark Cowett  
Tim & Candace Dee  
Fraternal Order of Eagles Past Presidents  
Julie Freyermuth (R.E.A.D.)  
Julie Gannon (R.E.A.D.)  
Frankie Gibbs  
Don Gomes  
Jason Grey  
Patricia Hogan  
April Hollingsworth  
Virginia Horner  
Michael Jeppesen  
Charles Landrey  
Gayle & Dayton Lierley  
Lincoln Financial Foundation (R.E.A.D.)  
Mari & Tom Lowe  
LST Salt Lake  
Eduardo Martinez  
Jane Paley-Price (R.E.A.D.)  
Pandora Store at Fashion Place, SLC  
John Paul & Colleagues at the Utah Dept. of Workforce Services  
Polly Parker Press  
Prairie Side Veterinary Hospital, Kenosha, WI (R.E.A.D.)  
Provision Bridge  
SelectHealth

Emery Stephens  
Harald Stock  
Allison & Deryl Strong  
Antonella & Robert Waidler (R.E.A.D.)

### \$250 to \$499

Chris Beck-McKay  
Diane Bracey  
Sara Brozovsky  
Charles & Zella Dahlquist  
Amber Dalzen  
Lauren & Georgianne Dalzen  
Laura Reed Deblase  
Steve & Valli Durham (R.E.A.D./ITA)  
Julie Freyermuth  
Debbie & Kevin Gardiner  
David Harris  
Lynn Jensen  
Ellen Jesaitis  
Jennefer & Tom Kesteloot  
Michelle Linck  
Sandi Martin  
Dan Mintz (R.E.A.D.)  
Linda Mulkey  
Paws 4 Help Fund (R.E.A.D.)  
Trindilyn Pearce  
Prudenting Foundation Gift-Matching (R.E.A.D.)  
John Raemer  
Scott Schun  
Dan Shaffer, Kim Anderton & Ella  
Smith's Community Partners  
Cynthia & Robert Spigle  
Youth Care of Sandy

### \$100 to \$249

ANONYMOUS (4)  
Leora Anderson  
Kathy & Ron Aoki  
Terry, Lynn, Mandy, Sam & Hitch Bell  
Alexis Butler  
Jill Bryson  
Charles Schwab Foundation  
Cynthia Byars  
Luano Chilleli  
Danzl Family Fund  
Carollyn Daye  
Dog's Meow Customers (donation box)  
Cecilia Dunston Edmondson  
Bruce Fishburn  
Cynthia Fleming  
Jean Glaser & Craig Payne  
GoodTherapy.org  
Akiko Hare  
Virginia Harris  
Susan Heath & William Tanner  
John & Marilyn Holt

Wendy Huffman  
Hilary Jacobs  
Catherine Kirby  
Fran Lancaster & Richard Herz (R.E.A.D.)  
Mary Kay Lazarus  
Richard Lockwood/The Group  
Stephanie Magid  
Nicole Miles  
Cathy & Mike Milner  
John R. Nelson  
Lisa Nishizawa  
Order of the Eastern Star of Utah, Grand Chapter  
Martin Presler-Marshall  
Protect Our Only Planet (P.O.O.P.)  
Bonnie Rockwood  
Laurel Romero & Amy Osborne  
Nancy Rosen  
Bette C. Ross  
Jodi & Pete Samsonov/The Pet Nanny  
Connie Sharkey  
Jennifer & Michael Siegel  
Doug Springmeyer  
Cindy & Richard Starley  
Tricia Sullivant  
Judy & Fred Tamagawa  
Steven Turk & Gloria Ajo  
Teresa Wassum (R.E.A.D.)  
Gary Wiedefeld  
Amanda Werner  
Crystal Wilkinson

### to \$99

Hope & Noah Alper (R.E.A.D.)  
Eileen Ambrose  
Apogee Instruments  
Holly Bauman  
Lucia Bellazetin  
Victoria I. Bennett  
Thomas Berggren  
Stephanie & William Biksacky  
Delores Blaser  
Ruth Blazek  
Ellen Bloedel  
Ginny Bostrom  
Karen Burns  
Sheila Caalim  
Camp Kostopulos  
Carla Carmain-Herret  
Helen Carney  
Peggy Chudd  
Gail Clingenpeel  
Cathy & Ed Cooper  
Margo Stangle Cowley  
Claudia Crump  
Bill Cutting  
Judith Davis  
Susan & John Dawson  
Debbie DeGroot  
Katie Domann, ovm

Marilyn Domenick  
Anna Drake (R.E.A.D.)  
Mary & Del Draper  
Cecilia Edmondson  
Kathy Edwards & Don Kiepp  
Penny Edwards  
Brooke Ellis  
Elaine Ellis  
Elaine & Henry Ellis (R.E.A.D.)  
Mary Ellis  
Mary Jo & John Elwell  
Ann Falldin  
Fundraise.com  
Wendi M. Gibbs  
Tyler, Anna, Tanner, Ella, Brayden and Carson Gillespie  
Kim Goldsmith  
GoodShop.com  
Ilana & John Gurr  
Hale Pet Doors (thanks to Carol Denning)  
William Hansen  
Dr. MJ & Dimas Hardman  
Richell Harris  
Virginia Harris  
Jeannine Heil/La Petit Chien  
Laurie Hilyer  
Home Depot  
Bonnie Hooper  
Mary House  
Madeline Jacobs, MD  
Karen Jarshaw (Village Ranch Alternative School) (R.E.A.D.)  
Catherine Johnson  
David R. Jouppi (R.E.A.D.)  
Dave Kearns  
Warren Keuffel  
Ricki & Scott Kresan (R.E.A.D.)  
Mary Kueberth (R.E.A.D.)  
Pam Lakomski  
Barbara & Frank Layden  
Melissa Lemieux  
Debbie Leger  
Jillian Lessner  
Thomas Lyness  
Jennafer Martin  
Mary Martin  
Sandi Martin  
Lynn McCarron  
Tracie McEwan  
Pamela Metz  
Analee Mickelsen  
Alan Miller  
Kay Miller  
Sven Miller  
Madonne Miner  
Terilinn Moyer  
Janet Horsley Mueller  
Sharee Muench (R.E.A.D.)  
Anne Moskowitz  
Ashley Nicholes  
Jaimee O'Brien

Mary T. O'Donnell (R.E.A.D.)  
Jan Owens  
Kim Paulding  
Jane Peterson  
Kim & LaCelle Phillips  
Linda Platts  
Christy Putnam  
Kristie Rasmussen  
Melissa Rasmussen  
Phyllis Reppucci  
Wilbur Rosser  
Melissa Rottmann & Friends (R.E.A.D.)  
Alice Cannon Schmidt  
Nancy Shaw  
Sandy Shelton  
Rhonda Shimmion  
Smashburger/West Valley City  
Jill K. Smith  
Elizabeth Smith (R.E.A.D.)  
Jane & Dave Staplin  
Art Swindle  
Clark Taylor  
Marge Thomas  
Amy Tornetta (R.E.A.D.)  
Betty Thompson (R.E.A.D.)  
Nancy Warmuth  
Anne Walton  
Carma Whiting  
Robin Wicker  
Williams Companies  
Winder & Counsel PC  
Beth Wolfgang  
Elizabeth Yukman

### IN-KIND DONORS:

Alexis Butler / The Dog's Meow  
Peggy Chudd  
Peg Chudd's Cleaning Services  
Susan & Skip Daynes  
Heather King  
Kathy Klotz  
Mountain Express Magazine  
Chris Pellegrino  
PETS MART  
XMission Internet Services

*Important: If you gave a gift and are not properly acknowledged herein, please accept our sincere apologies. Please contact our office (801-272-3439) so that we may make necessary corrections and recognize you on this page next time. We thank you with all our hearts for your faithful support of ITA and R.E.A.D.! ♥*



# R.E.A.D.®:

## Olivia's Legacy

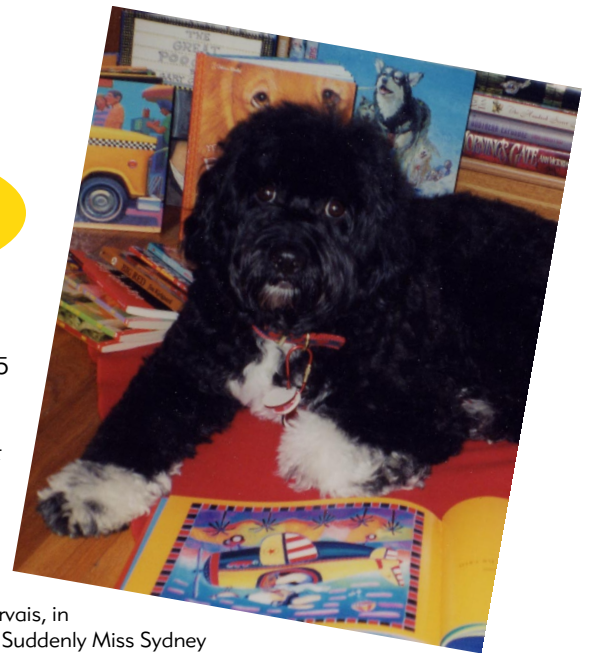
The following are the core believers who have contributed at least "\$15 for 15 years" (and in many cases much more) to found the "Olivia's Legacy" Endowment Fund, to ensure that R.E.A.D. can continue to bless children's lives for many years into the future. There is a lovely placque in their honor at R.E.A.D. Headquarters in Salt Lake City!

ANONYMOUS, in honor of Josie, Noah and Sophie, the original R.E.A.D. dogs for Paws to Read  
Dawn Adrian, in memory of Kip, my first R.E.A.D. dog  
Ellen Agler & Lancer (my new R.E.A.D. German Shepherd)  
Mary Beth Applefield  
Judith Armstrong, in honor of Liza, my R.E.A.D. dog, and in memory of Zulu, Tani and Chukua, who never had the opportunity to R.E.A.D.  
Carol Bailey  
Carolyn Barnes  
Jacqueline Barrington  
Jean Batten  
Brett & Rachael Beasley, in honor of Jaro and Jett  
Patricia Belt and the Tennessee Safety Spotters, in honor of Lottie Dott  
Ann-Marie Biden  
Margaret Bolin-Fellows  
Lori Bonanno, Emma & Jax  
Kelly Bongard and Wags for Hope  
Pamela Bourque, Rissa, Timber & Jill  
Barbara Bower  
Joan Bradshaw  
Carl Brandon  
Laura & Robert Bridges  
MaryAnn Briggs & Luna  
Cathlene Briody, in memory of Genny  
Joan Britt & Polly  
Gwen Brock, Brinkley & Catie  
Marie Brookhart & Buckshot  
Laura Brooks, in memory of Bailey the guinea pig  
Nancy Brooks, in honor of Franklin and in memory of Sassy  
Kim & Archie Buck, in memory of Fanore (Fannie) Marsh  
Twyla Buzick, in memory of Gabby  
Sue Chapin  
Peg Chudd  
Charlotte Cline, Fred, Suki Su & Foreman  
Duane Clink & Babe

Coastal Carolina Pet Provided Therapy  
Stephanie Cooper  
Jennifer Cromwell & Brian Reed, for Kyra Cromwell Reed  
Judy Curtin  
Terry Cuyler  
Erika Daines  
Rhody Dalsemer  
Marie Daniel & Teamster  
Staci Daugird & Disney, Alexis Daugird & Family, in honor of Ms. Jacqueline Wells and the staff at Waunakee Intermediate School, Waunakee, Wisconsin  
Ann Davis & Penny  
Nancy DeLoatch  
Diane DeSilva, in memory of Lady  
Sharon Detro  
Anne Diekema  
Norma Disz, in honor of Max, and in memory of Sam & Tom  
Elena Dominguez Iten  
Doree Donovan  
Robbie Sue Downs  
Christine Doyle, in memory of Poky  
Nancy Duerling, Ada & Bentley, in honor of the students and staff of The Ridge School of the Eastern Shore, Cambridge, Maryland  
Sally Eller, In memory of Jackson  
Gloria Jeanne Epp  
Susan Evans  
Ann Ewald & Bella  
Bonnie Farman  
Mary/Lee Fay  
Margaret Fellows  
Kathleen Fendt  
Leona Ferris  
Jane Lee Fischer & Charlie Miracle  
Laurel Fleming & Taboo, in memory of Dakota & Angel  
Joanne Forsythe  
Carolyn Fossett  
Katryna Fredregill  
Linda L. Frey & Murphy  
Sharon Fricke  
Lisa Gabriel & Echo  
Sharon Garber & Herbie

Jennifer Gervais, in honor of Suddenly Miss Sydney  
Pat Ghoca & Toby  
Jeri Ghosh, Boomer & Jay, in memory of Milt Powell and Mrs. Daher  
Merilee Giddings & Phoenix  
Jean Glaser, in memory of Bob Gulliver  
Jeanette Golden  
Lynn Goldfarb  
Robert Goldfarb  
Janine Gorline & Quincy  
Lynn Goulding  
Nancy Graves & Tigger  
Robin Gray  
Judith Groner  
Jo Ann Guise, in memory of Sarah  
Barbara Hals, in memory of Nick  
Sandra Hamilton. Higgins & Gabby  
Lenore W. Harmon  
Victoria Harris, in memory of Seven  
Charlotte Headrick, in memory of Bantry & Pirate  
Frances Henry, in memory of Cinder & Luke  
Amy Hicks  
Wendy Hitch, in memory of Pookha  
Wendy Hoffer  
Shirley Holdman  
Carol Horner, Auggie & Becca  
Debbie J. Housworth  
Bunny Hudson & Freddie  
Ashley Huffman & Lissie  
Margot Hunjan, Jeet & Dudley  
Huntsville (TX) Pets Helping People, in memory of Susan Jane Loudenslager Harris  
Gayle Igarashi and Tails of Aloha  
Chip Ingersoll and Cheryl Wagner, Alex & Bella  
Ellen Jacobs  
Ellen James  
Kathy Janes  
Becky Jankowski and the Pawsitive Therapy Troupe R.E.A.D. Teams

Sherwood Johnson  
Dave Jouppi, Sadie & Ellie  
Diane Julain  
Martha Kadas  
Robin Kass & Sheila  
Nancy Kaufman  
Diane Kihara  
Debra Klaben  
Kathy Klotz, in memory of Foster, one of the ITA R.E.A.D. dog pioneers  
Jeannie Kovacs & Rex  
Lila LaBombard  
Alice Laby  
Christie Latour  
Gloria Laube, in memory of Sunny Treasure  
Eva Lautemann  
Vicki Lindquist  
Debbie Locke for Paws 4 a Cause  
Jennifer Lockman & Honey  
Bee Lufkin  
Sydney Magid  
Karen Malecha & Copper  
Anne Malver, memory of Sara  
Nancy Marquez  
Betsy Martin, in honor of Chalie  
Sandi Martin, in memory of Olivia, R.E.A.D. Dog #1  
Wendy M. McCoy and the GSD Gang  
Tracie & Carlee McEwan, in memory of Bob Gulliver  
Sharon McKelvey  
Kathy McNulty  
Jean Menard, in memory of Daisy  
Paula Mercer  
MidSouth Therapy Dogs/Mary Ehrhart, in honor of our past, present and future R.E.A.D. dogs  
Chris Miller  
Kay Miller & Shelby, in memory of Scruffy & Dusty



(Continued on page 12)

# Goodbye & Godspeed

## RETIRING:

*Sadie*

ITA partner of Mary Holmes

*Katie*

Golden Retriever partner of Stephanie Call

*Kira*

Boxer partner of Anette Fjeldstad

*Lily*

Great Pyrenees partner of Tamar Prero

*Copper*

Golden Retriever partner of Peggy Lundberg

*Lilly & Murphy*

Bernese partners of Gail Foresman-Plumb

*Mack & Molly*

Newfie partners of Gretchen Moison

*Ready*

Border Collie partner of Glee Greenwood

*Sadie*

Papillon partner of Autumn Ennis

*Oliver*

Yorkie partner of Nancy Johnson

*McKenzie*

Collie partner of Sandra Francis

*Krystal*

Black Lab partner of Susan Leaverton

*Carbon*

Golden Retriever partner of Shannon Tilly

*Chester*

Newfoundland partner of Ellen Jesaitis

*Mariko*

Lab/Golden partner of Lee Tansock

*Diesel*

Black lab mix partner of Tova Arnold

*Brody Tucker*

Standard Poodle partner of Shelly Shipley

*Sienna*

Golden Retriever partner of Roberta Ennis

*Sadie*

German Shorthair partner of Gary Wiedenfeld

*Dusty*

Shetland Sheepdog partner of Kay Miller

*Emily*

Shetland Sheepdog companion of Kathy Klotz

*Simba*

Shetland Sheepdog partner of Tiffany White

*Fallon*

Black Lab partner of Kim Goldsmith

*Chase*

Shetland Sheepdog partner of Connie Sharkey

*Ruby*

Golden Retriever partner of Mark Edwards & Blair Richter

*Lucy*

Miniature Schnauzer partner of Martina Nelson

## DECEASED:

*Rusty*

Yellow Lab partner of Anita Sjoblom

*Bridget*

Chocolate Lab partner of Virginia Harris

*Seven*

Chocolate Lab partner of Bethanne & Jonathan Dinerstein

*Baker*

German Shepherd partner of Melissa Wolf

*Barclay*

St. Bernard partner of Lori Stockinger

*Sampson*

Mastiff/Dane partner of Heather Hoang

*Bella*

Bernese partner of Angela Mastaloudis

*Coupe*

Basenji partner of Christine Nelson

*Jinger*

ITA partner of Mary T. O'Donnell

*Skittles*

Papillon partner of Lori Thomassen



We are saddened to report the death of **LYNDA SIMMONS** of Brigham City, Utah, of pancreatic cancer on March 30, 2014. Lynda & Keystone were a powerfully effective team and an inspiration to countless others in ITA's early years. They volunteered together for Keystone's whole life, and Lynda was the leader of our Northern Utah chapter. Lynda was just 69 years old.

*I Am Always With You*

*When I am gone, release me. Let me go.*

*I have so many things to see and do, you mustn't tie yourself to me with too many tears, But be thankful we had so many good years.*

*I gave you my love, and you can only guess how much you've given me in happiness.*

*I thank you for the love that you have shown, but now it is time I traveled on alone.*

*So grieve for me a while, if grieve you must, then let your grief be comforted by trust That it is only for a while that we must part, so treasure the memories within your heart.*

*I won't be far away for life goes on.*

*And if you need me, call and I will come.*

*Though you can't see or touch me, I will be near, and if you listen with your heart, you will hear all my love around you soft and clear.*

*And then, when you come this way alone, I'll greet you with a smile and a "Welcome Home."*

# Recognition & Memorials

## *Gifts to Honor & Remember*

### **In MEMORY of . . .**

*Abbey, companion of Lynn Rilling & John Englund. Here's to Abbey's sweet smile, gentle nature and boundless love. What a gal!*

Hilary Jacobs

*Barclay, ITA partner of Lori & John Stockinger and the gentle, water-loving giant, in memory of his 11-month battle with cancer*

Tyler, Anna, Tanner, Ella, Brayden and Carson Gillespie

*BEAR Boy*

Rogue, Sophie, Cooper, Grace & Queen Elsa

*Bella, Bernese Mt. Dog ITA partner of Ryan Federspiel and Angela Mastaloudis*

Peggy Chudd

*Bob Gulliver, partner of Jean Glaser*

TracieMcEwan

*Brady, ITA therapy partner of Jill Bryson*

Connie Sharkey

*Bridget, my ITA partner*

Virginia Harris

*Brinkley*

Lori & John Stockinger

*Buffy, our dear companion and Therapy Dog Extraordinaire*

Vera & Bruce Wood

*Cash Hyde*

Rhonda Shimmon

*Chica, companion of Nancy & Bud Cranford*

Frankie Gibbs

*Coco, companion of David Halsted*

Frankie Gibbs

*Colonel, late partner of Susan Daynes*

Mary Kay Lazarus

*Daisy, Linzee, Waldo & George*

Reeve Chudd & Marian Mann

*Doc, my R.E.A.D. Greyhound Pet Partner. He was my heart.*

Mary Kueberth

*Dusty, ITA therapy and service dog partner of Kay Miller*

Kathy Klotz

*Dyna, ITA therapy partner of Jill Bryson*

Connie Sharkey

*Emily, my longtime companion and ITA office dog*

Kathy Klotz

*Emily, companion of Kathy Klotz*

Nancy Barthelms

Luana Chillemi & Hazel

Peggy Chudd

Sandi Martin

Kay Miller

Nancy Rosen

*Emily, (cont.)*

Laurel Romero

Connie Sharkey

*Fitz, companion of Laurie & Dave*

Elaine & Henry Ellis

*George, ITA therapy companion of Peggy Chudd*

Katie Domann

*Gidget*

Teresa Wassum

*Jimmie Sophia*

Hilary Jacobs

*Jinger*

Mary O'Donnell

*KC (Killer Cottonball), therapy companion of Nancy*

Rosen

Ellen Jesaitis

Kathy Klotz

Elizabeth Smith

*Kelty, Antonella's therapy dog*

Antonella & Robert Waidler

*Kitocat Yukman*

Elizabeth Yukman

*Kizzie, ITA Partner of Debbie Kovar-Clark*

Connie Sharkey

*Lola, companion of Virginia Byrd & Tony Reiter*

Hilary Jacobs

*Piggy, my ITA partner*

April Hollingsworth

*Princess Laffy Taffy, very loving Basset companion, very much missed by us and her buddy Morgan*

Mary Jo & John Elwell

*Riley, companion of Wendy Yeckley*

Amy Tornetta

*Neil Sideen*

Karen Jarshaw and the Village Ranch

Alternative School

Robin Wicker

*Tess Ware Thompson*

Margo Stangl Cowley

Catherine Kirby

Debbie Leger

John R. Nelson

*Usher vom Adlercrest, our beloved Doberman who was our therapy dog even if he didn't visit facilities or have certification*

Paulette Bethel

*Usher, companion of Paulette Bethel*

Cindy & Richard Starley

*Vicky Whitney*

Nancy Rosen

*Zorro, cat companion of Scott & Paula Breen and Chris Breen*

Frankie Gibbs

### **In HONOR of . . .**

*All of the ITA therapy animals who have made ICS at Primary Children's a more special place*

Cindy & Mike Bender

*Alfie, my R.E.A.D. Partner*

Sharee Muench

*Bailey*

Laurie Hilyer

Thomas Lyness

*Betsey, new Keeshound partner of Carol Prince*

Gail Clingenpeel

*Cayenne & Rory*

Nancy Shaw

*Peggy Chudd*

Reeve Chudd & Marian Mann

*Susan Daynes*

Art Swindle

*Michael N. Dietz*

Dr. M. J. & Dimas Hardman

*Norma & Max Disz, and Erika & Flocki Daines*

Judy & Fred Tamagawa

*Dory*

Stephanie Magid

*Flocki and Erika Daines*

Clark Taylor

*Lisa Frazee*

Lincoln Financial Foundation

*Doreen Garvin*

American Express Employees

*Jean Glaser*

Terry, Lynn, Mandy, Sam

& Hitch Bell

*Lily Rose & Lynne Hanson*

Bruce Fishburn

Linda Mulkey

John Raemer

Emery Stephens

Harald Stock

*Pat Hemingway's birthday*

Tim & Candace Dee

*Jim Kearns*

Dave Kearns

*Karen E. Kelly*

Anna Drake

*Frank & Elisabet Landrey*

Charles Landrey

*Peggy McElvain*

Ruth Blazek

*Ralph Marshall & Liz Dranow*

Martin Presler-Marshall

*Craig & Tammy Metz's 40th Anniversary*

Pamela Metz

*Norbert*

Julie Freyermuth

*Michael Price*

Dan Mintz

*(Continued on page 20)*

## Olivia's Legacy

(cont. from page 9)

Patricia N. Mitchell  
Sarah Mitchell  
Julie Montilla  
A. J. Morris  
Joan Morton  
Bobbie Mosher & Maya  
Virginia Mosher  
Joan Myers  
Ella Nagy  
Jan Nemcik  
Kevin Nosbisch  
Christina/Joel Ohlsen  
Monica Ozwoeld  
John Pabst, in memory of Sky  
Maggi Payne, in honor of Merilee Kelley  
Paws 4 a Cause  
Denise Perkins & Missy  
Debra Perlo  
Marla & Matthew Perlstein  
Phillip & Carolyn Perrault  
John & Rebekah Perrella, in memory of Millie  
Donna Pettit  
Shelley Pierce & Scooter  
Amy Pitts & Garbo  
Barb Possehl  
Steven Potter  
Diane Pottorf  
Terry Pratt, in memory of Strider  
Jane Paley Price  
Michael Price & Henry  
Connie Priesz & Doug Tietz, in honor of Molly  
Prudential Foundation Matching Gifts  
Jenny Puccinelli  
Marilyn Rabenhorst  
Loretta Ranscht & Wilson  
Pat Rapaport  
Kathryn Redondo, in memory of Emilee  
Karen Reinhold  
Sharon Rendall & Barkley  
Bertt & Linda Rizzi  
Rachel Roach  
Nancy Rosen & Eli, in memory of K.C., the last of the original ITA R.E.A.D. dogs  
Eileen Roston, in memory of Lucy  
Steph Royer  
Brenda Rudolph, in memory of Sam  
Jan Sangaree & Zacky  
Shirley Schatz  
Jill Schilp & Junio, in honor of the founding members of A New Leash on Life therapy dog group in North Texas  
Debbie Schirf & Ruthie Mae  
Nathan Schneider

Susan Schultz, in honor of Bunny Frost & Teri Holamon  
Elizabeth Shannon & Skimmer, in honor of Sandi Martin  
Merrily Shultz & the Three Westies, in honor of Shirley May  
Kerry Sills & Izzy  
Mary & Bill Silva  
Karen Simecka  
Anita Sjoblom  
Kelly & Dr. Anthony J. Skiptunas III, in memory of Benny  
Donald Paul Smith & Brasil  
Patti Smith  
Jacqueline Smith  
Shepherd & Isobel Spink  
Bob & Elayne Stable  
Janet Stastny  
Sophie Steward  
Lori & John Stockinger, in memory of Rockea  
Summit Therapy Animals  
Kim Swanson  
Tails of Joy in Connecticut  
Joy Thompson  
Jackie Tiffany  
Linda Tipton & Jasper  
Mary Beth Turek  
Gayle D. Vance, memory of Bailie  
JoAnne vander Bruggen  
Wendy Waddick  
Elisabeth Waggoner  
Maria Waine  
Barbara Walsh & Sandy  
Patrick & Barbara Ward, in honor of Sandi Martin  
Jamie & Tim Ward, in honor of Taka, and in memory of Emma  
Nancy Jane Ward, in honor of Tori  
Sandra Weger  
Nora Wilcox & Molly  
Deborah Wiley & Dazzy  
James Wilmoth  
Deb Woerpel  
Lisa Wright  
Andrea Yost  
Rene Zona



*On behalf of all of us at R.E.A.D., and so many thousands of children around the world ... thank you all. ♥*

# Dear ITA

## Letters from our Friends

March 4

Dear ITA,

I am writing to thank you for your wonderful R.E.A.D.® program. My classroom was recently blessed to have Mrs. Jacquie St. John and her therapy dog, Hobie, in my classroom to read with my students. I teach in a multiple-disabled classroom that until recently has been struggling with gaining interest in reading. That all changed when Hobie was first introduced to my classroom. Suddenly, even students who were not reading previously were consumed with learning to read for Hobie. My staff and I were moved to tears as we watched the once unmotivated students ask for more time reading with Hobie. It is so wonderful to be a part of a program that brings joy as well as an educational foundation to the classroom. Thank you for designing this program!

*Kaitlyn Mierzejewski*

C. J. Davenport Elementary  
Egg Harbor Township, New Jersey



March 14

Dear Doug & Putter of ITA,

This donation to ITA is a token of my appreciation to you both. Your calm and encouraging presence in the Huntsman Cancer Institute during my sessions in the infusion center were nothing short of inspirational.

Thank you so much for the gift of yourselves. You are an important part of my recovery and I am forever grateful to you both.

*Cindy Byars*

Ferron, Utah



February 20

Dear ITA,

It is with great pleasure that I send you a donation for R.E.A.D. for all the amazing work that has been done these past 15 years by staff and teams. I was a R.E.A.D. member years ago when I lived in NYC with Hope, who has since passed on. As an elementary school teacher in a private school on New York's Upper East side, and later a reading tutor at a tuition-free school in Harlem, I knew immediately how wonderful R.E.A.D. was, and I know it still is.

I moved to the North Shore of Boston four years ago and became a member of New England Pet Partners in Pelham, New Hampshire. The good news is I now have a year-old puppy, Joy, who has just been passed and I am hoping by late spring or summer we can aim towards becoming a R.E.A.D. team again.

Congratulations for the incredible, life-changing first 15 years of Reading Education Assistance Dogs!!!!

*Rhody Dalsemer*

South Hamilton, Massachusetts



March 2014

Dear Kathy, Karen, Erik, Mark, Jenny & Jerry,

Thank you so much for the wonderful evening you provided for our Cub Scouts. The presentation was perfect and the dogs were a real highlight. We are so grateful for the thoughtful presentation and all the time spent for our scout troop. It was an evening they will remember for years. We can't thank you enough!

*Sheryl Dame and Amy*



Dear R.E.A.D.,

Please accept the enclosed as a donation to the R.E.A.D. program in Olivia's memory. Normally, I would not be able to contribute so much, but this came to me serendipitously (don't worry, I didn't steal it), and I'd like to pass it on to you.

My Portuguese Water Dog, Gabby (now deceased), was a R.E.A.D. dog for about five years. I count those as some of my most satisfying volunteer experiences; she and I both loved it. Having been involved in other reading programs since, I still think the R.E.A.D. experience is the most productive for helping kids learn to love reading. My current dog is not patient enough, but I anticipate getting a dog in the future who can be enrolled in the program again.

Thank you for all you do, and keep up the good work!

*Twyla Buzick*

Lakewood, Colorado



Dear Everyone at ITA,

I wanted to thank you for the opportunity you gave us for Piggy's magic powers to touch so many. She was so special ... I'm grateful for the chance I had to share her bright light with the kids at Shriner's and others.

I know you will continue doing your great work, so I am enclosing a contribution to that effort in Piggy's memory. Here's to love and healing in 2015!

*April Hollingsworth*

Salt Lake City, Utah

Each of our 350+ ITA therapy teams is absolutely unique, since all the people and animals bring to their volunteer practice an endless kaleidoscope of ages, sizes, breeds, backgrounds and talents.

What about you and your companion animal? If you think you both might enjoy volunteering with ITA, providing animal-assisted therapies at one of the more than 150 facilities we visit, call us to learn more:

**801.272.3439**



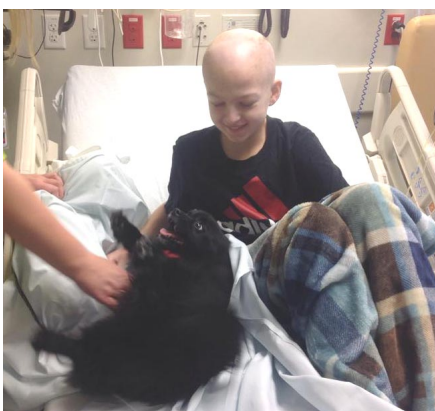
### Britton's Album

March 4, 2015

Just wanted to thank you all for the therapy animals 'cause I'm a cancer survivor and they helped me stay positive and I always had a smile when they came to visit me at Primary Children's Hospital.

On January 20th, 2014, I was life-flighted from Idaho to Primary because my left arm and leg went paralyzed. I also developed double vision and could only see clearly with one eye closed. On February 12th I was diagnosed with a rare CNS T-cell Lymphoblastic Lymphoma. My first stay in the hospital was for 44 days. It was really hard to be in the hospital so long and to have to return for more treatments. The many dogs who visited me helped to take away all my worries and stress about being in the hospital and having cancer. I'm now in the seventh month of my bone marrow transplant. When I return to Primary for my clinic appointments, I still look forward to the dog visits. I have many photos of the dog visits and I will attach a few. Thanks for your service with the dog visits.

*Britton Pugh*  
on Facebook



### Therapy for SLC Airport Travelers

Therapy dogs are back at SLC International Airport, providing a happy distraction and stress relief! ITA dogs joined with dogs from Therapy Animals of Utah to provide this volunteer service.

Benny the Beagle, partner of Lisa & Tim Miller, was one of the first to jump in. Airport personnel suggested a 50# minimum, and Benny is much smaller than his friends, but he qualified because he has a very big heart!



*These photos are just a few of Britton's collection. He may have set a record with the number of different dogs he visited with. FROM THE TOP, WITH: Scout, Juniper, Panda Bear and Roxie. AT RIGHT: Otis.*



**Our 3rd Pupcracker performance was hosted in December 2014 by Salt Lake Tribune humorist Robert Kirby, and all performances were sold out for the third year in a row!**

*FROM THE TOP: Kirby watches as the Basset Dogernacle Choir makes its entrance from under his skirt; the whole scene was dazzling in the Jeanne Wagner main stage theater at the Rose Wagner Complex; the toy train, with Cassie Curtis and her bunnies, was another one of this year's new additions. BELOW: Clara (Robin Carlson's Tucker) and the Prince (Jenny Woods' Fred) meet and fall in love; Teddy & Lauren Tarufelli, Betsey & Carol Prince, Sasha & Diane Gunnell.*



*Upcoming*

**Mark Your Calendars and Join Us!**

7th Annual  
**Paws**  
in the  
**Alley**

**BOWLING FOR ITA THERAPY ANIMALS**  
**Sunday, April 12, 2015**  
**Olympus Hills Bowl**

For more info, and to register  
your team, go online  
([www.therapyanimals.org](http://www.therapyanimals.org))  
or call  
**801-272-3439!**



**Sponsored By**



*ITA's Annual Fundraising Gala*



**THIS IS THE  
PAWS**

ITA FUNDRAISER

SEPTEMBER 26, 2015

Intermountain Therapy Animals • [www.therapyanimals.org](http://www.therapyanimals.org)

**Saturday, September 26th, 2015**  
**This is the Place Heritage Park**  
**6 to 9 pm**



## R.E.A.D.ing Moments

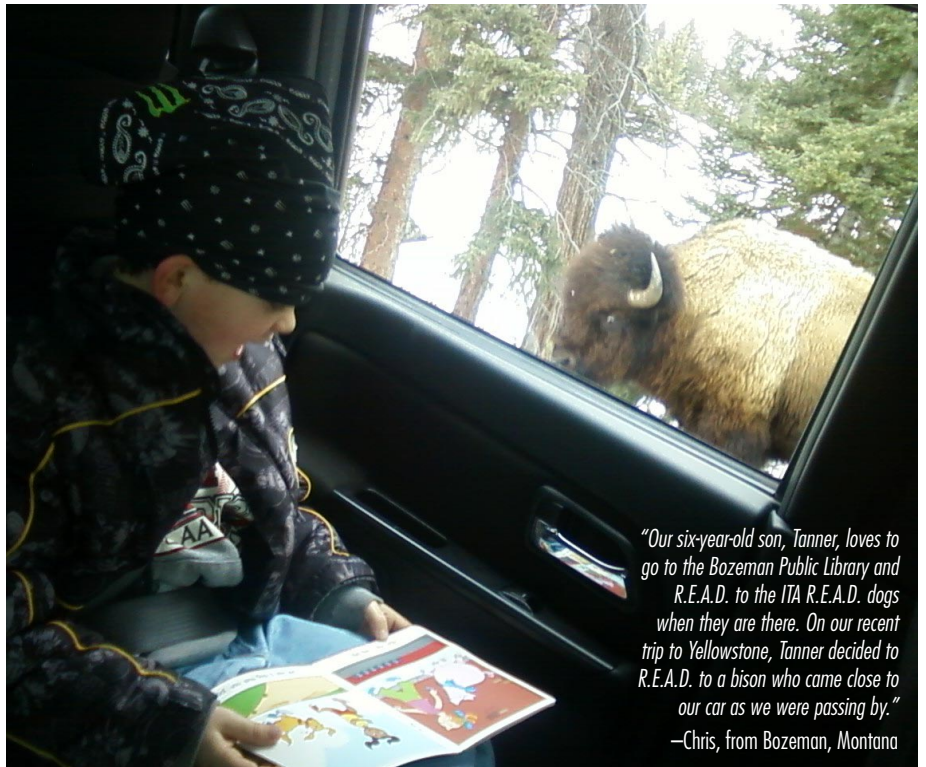
Still growing and thriving for more than 15 years, ITA's Reading Education Assistance Dogs® (R.E.A.D.) program keeps on bringing joy and satisfaction to thousands of children around the world. ♥



R.E.A.D.ing at Copperview Elementary in Murray, Utah:  
(ABOVE:) Jack, partner of Allison Strong, and (BELOW:) George, partner of Peggy Chudd.



(ABOVE:) Christopher Lane grins in a happy connection with Misty, partner of Phyllis Warner of our affiliate READING Paws, at the Minneola Elementary Charter School in Minneola, Florida.



"Our six-year-old son, Tanner, loves to go to the Bozeman Public Library and R.E.A.D. to the ITA R.E.A.D. dogs when they are there. On our recent trip to Yellowstone, Tanner decided to R.E.A.D. to a bison who came close to our car as we were passing by."  
—Chris, from Bozeman, Montana

"Animals are such agreeable friends - they ask no questions, they pass no criticisms."

George Elliot



Pioneering healthy stuff for cats and dogs in Utah since 1996.

**Draper:** 801 · 501 · 0818  
866 East, 12300 South  
Draper, Ut. 84020

**SLC:** 801 · 468 · 0700  
2047 East, 3300 South  
SLC, Ut. 84109

Like us on:  
 **facebook.** [www.dogsmeow.com](http://www.dogsmeow.com)  **@dogsmeowutah**



## AIM THAT CAR OUR WAY!

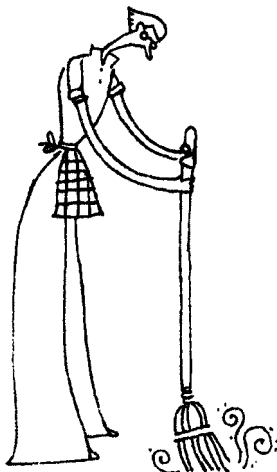
*Donate your vehicle to*  
**Intermountain Therapy  
Animals**

Unwanted but usable vehicles. Most are welcome including cars, trucks, motorcycles, boats, RVs, etc. Vehicles must have a clear title and no major damage. Some restrictions apply. To donate, just go to our website: [www.therapyanimals.org](http://www.therapyanimals.org)

*For complete details, go to*  
[www.vehiclesforcharity.org](http://www.vehiclesforcharity.org), or call

**1-866-628-CARS (2277)**

- Free Pick-Up
- Free Title Services
- Potential Tax Deduction



**PEG CHUDD**  
Cleaning Service  
801.466.2639 / 801.915.3647(cell)

Intermountain Therapy Animals is proud to be one of the 20 Utah nonprofit organizations participating in Community Shares/Utah.



### Utah Charities Golf Challenge



Intermountain Therapy Animals is pleased to be one of the charities that receives funding from the Utah Charities Golf Challenge, sponsored by the Utah Families Foundation and hosted by U.S. Senator Orrin Hatch and his wife, Elaine.

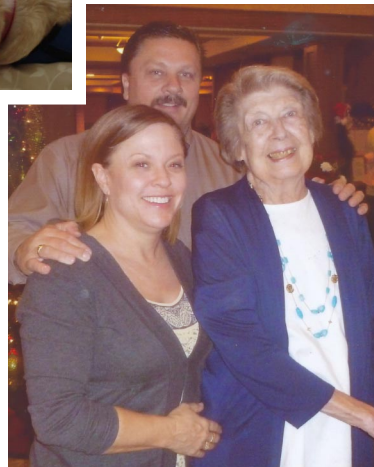
# Mrs. Lynne P. Sherman Wills ITA a Significant Gift

Intermountain Therapy Animals received a major gift from Mrs. Lynne P. Sherman, who wanted to leave funds to a cause that involved animals since she had loved them all her life. Her best friends, Heidi and Tom Muir, told her about ITA and, after hearing more and meeting Susan Daynes & Diva, she was convinced that we were worthy recipients.

We are honored to have received this significant amount from this lovely lady, a few months after her passing. It will bless our organization and its ongoing stability for many years to come. ♥ (Kathy Klotz)



ABOVE AND AT LEFT: Mrs. Sherman enjoying her visit with Susan & Diva; BELOW: with her friends Heidi & Tom Muir.



## Dog Show: A New Showmanship

from *E. B. White on Dogs* (2014)

In *The New Yorker*, February 23, 1935

The Talk of the Town: Notes and Comments

Next year, when Dog Show time comes round, we would like to see a wholly new brand of showmanship introduced into the Garden. We were horribly bored by the judging last week—all that business of standing around a ring, hour after hour, brushing a dog's hair the wrong way and jacking his tail up with the palm of your hand. Who cares, anyway?

Only a handful of fanciers know about a dog's points, and besides, conformation and ring manners are piffling qualities in a dog, revealing little about the animal's character, exploits or temper.

A dog should be made to work for his ribbon, each breed in his own wise. Pointers should have to point, Shepherds should be required to herd a band of sheep from the east goal to the west goal, Poodles should be required to jump through a paper hoop, not just follow Mrs. Sherman Hoyt around the ring. English bull terriers should be made to count up to ten, retrievers retrieve rubber ducks, Scotties chew up old shoes. Greyhounds should be put over the high hurdles, Sled dogs should race with a little anti-toxin, while St. Bernards carry brandy to anyone in the audience who feels weak, preferably us. Beagles would jolly well have to beagle, or shut up.

How about it, dogs—are you dogs, or mice?

**In Honor of . . .**  
(Continued from page 11)

- Carol Prince and Betsy, her Keeshond ITA partner  
 Delores Blaser  
 Gail Clingenpeel  
 Anne Moskovitz  
 Samantha, companion of Meg Kelley  
 Madonne Miner  
 Natalie Schun  
 Scott Schun  
 Scout's 4th Birthday (partner of Mark Edwards)  
 Susan & John Dawson  
 Doug Springmeyer & Putter  
 Cynthia Byars  
 Sherry Underwood  
 Apogee Instruments  
 Teresa White  
 Luana Chilelli  
 Wendy Yeckley's 40th Birthday  
 Amy Tornetta  
 Ronald Zeman  
 Melissa, Shelly, Sally, Dawn & Lucia

**ITA's Wish List**  
**We're Begging for . . .**

- 8.5 x 11 white paper by the case, for copying and printing
- Flash drives
- Gift cards to office supply stores, Costco and Target
- "Forever" postage stamps
- Sponsors for our training workshops and manuals
- New children's picture books (for ages 4-8) for the R.E.A.D. program.




*"Who'd have thought that the highlight of my day is walking the dog . . .?"*

— Ava Gardner, Hollywood film idol and femme fatale legend, on growing old.

From Ava Gardner: *The Secret Conversations*

**Now-we've-almost-heard-it-all Department:**

A text from an employee at Disney World in Orlando:

"OMG - I just had a woman pushing a stroller with a red wheelchair tag on it and a barking dog in it. When I approached her about it, she didn't tell me her dog was a service animal. It was just the opposite—she said she was the service assistant for the dog and that the dog could not be without her."

**Mt. Zion opens doors to dogs**  
(Continued from page 21)

night when he came home from work and still remembers the heartbreak of having her euthanized when she became ill from Graves Disease. His family also has opened their hearts and home to a Persian cat, as well as a white Dutch bunny and a gray shorthair feline rescued in a rain storm.

Today, a beagle named Holly "allows my family the privilege of her company," Deal shared. But Holly is 13 years old and has been having physical issues lately, he noted. She currently is taking pain medication and muscle relaxants to help alleviate or lessen her ailments. "We're hopeful," Deal said. "But we also realize that, like people, our pets only live for so long." So he, his wife Pam and their two children are preparing themselves for the devastation of one day soon telling Holly goodbye.

"For those who love their pets," Deal said, they're not just animals. "They are part of the family." And if they are part of the family, he added, "why not invite them to church?"

The idea for a doggie worship service came about after the local pastor read a story about the Rev. Ann Bullis of Wesley United Methodist Church in Sheboygan, Wisconsin, who encouraged her congregation to bring their canine friends to a 9 a.m. Sunday service. "I thought, 'Hey, she's on the right track,'" Deal recalled.

Not only do many pet owners love their animals like children, he said, "there are some folks who don't like leaving their pets, especially dogs, at home alone. I thought it would be nice if they could be provided with a warm, welcoming and comforting place to worship with their canine companions. And Mt. Zion United Methodist Church is just the place. I refer to Mt. Zion as the little church with the big heart." ♥

## Mt. Zion United Methodist Church (in Texas) opens doors to dogs

When the Rev. Al Deal stands in the pulpit of Mt. Zion United Methodist Church in Smithsburg, Texas, on Sundays, he is preaching to one of the most unique groups of congregants to walk through his doors.



Pastor Albert Deal sits with his dog, Holly, at Mt. Zion United Methodist Church in Smithsburg, Texas, where a church service each month will be dog friendly.

While some never make a sound, others are downright disruptive. A few even prefer lying on the floor. And when the first notes of music begin, you might hear some off-key yelping instead of singing. But that's to be expected when you put paws in the pews. It's a little woof-woof and worship, for an unusual breed of church-goers who bring their dogs to his pet-friendly services.

An animal lover who comes from a family of dog and cat owners, Deal understands firsthand the loving connection between people and their pets. He once had a chocolate tabby who trotted to the door to greet him every  
(Continued on page 20)

## New Study: Dogs absolutely know if you are trustworthy

Most of us think of our dogs as one of the most trusting animals we come in contact with. While the cat stares at you from across the room — clearly sizing up whether your existence is acceptable — the dogs comes running to you for pets, kisses or just to be near you.

However, the results of a study published in *Animal Cognition*, a scientific journal, suggest that not only are dogs skilled at interpreting human body language, but that they quickly learn when someone is not "telling the truth" and will make judgments about listening to that person in the future.

Turns out, dogs don't appreciate teasing or deceit any more than humans do.

### The Experiment

The study was led by Akiko Takaoka of Kyoto University in Japan. They tested 34 pet dogs in a version of the "object choice task" — where they put food under one of two containers. Then they ran several tests.

Phase 1 — they had a person point to the container with food.

Phase 2 — after showing the dog the contents of both containers, the person would point to the empty container.

Phase 3 — they repeated Phase 1.

What did they find?

They found that after the person had pointed to the wrong container in Phase 2, in Phase 3 the dog would not "trust" the human's pointing and would not go to the container.

Then, they brought in a new experimenter to do Phase 1 again, and the dogs followed the pointing.

Takaoka told BBC.com "that she was surprised that the dogs 'devalued the reliability of a human' so quickly."

Read more at <http://theilovedogsite.com/new-study-dogs-absolutely-know-if-you-are-trustworthy/#UYHxkYCA7mBdljVj.99>

— Kristina Lotz

## Service dog protects girl during anesthetic procedure

JJ, a service dog trained to detect allergic reactions at the molecular level, helped safeguard 7-year-old Kaelyn Krawczyk during a procedure under anesthesia at Duke University Medical Center.

Kaelyn has mastocytosis, a rare condition in which mast cells release histamines and other signals in response to almost any external stimulus such as heat or cold.

JJ was trained to alert Kaelyn and her parents at the onset of a problem, and the dog is so sensitive to triggers that she

can detect a reaction long before any overt signs occur. "It sounds silly, in this age of technology, when we have millions of dollars worth of equipment beeping around me, that we had a little dog who was more sensitive than all the machines," said anesthesiologist Brad Taicher.

— *The News & Observer*  
(Raleigh, N.C.)

# Art for the Heart



Jean Glaser — Animal Portraits

For more info and pricing please see my website  
[www.jeanglaseranimalportraits.com](http://www.jeanglaseranimalportraits.com)

435-602-9158

Email [jean@craigandjean.com](mailto:jean@craigandjean.com)  
 10% Discount for ITA Members

## WAG MORE, BARK LESS.



Mention ITA and a %age of your P.O.O.P. bags purchase is donated to us! Thanks!

## Facilities & Programs (Cont. from page 23)

LaMotte School (R.E.A.D.)  
 Longfellow Elementary (R.E.A.D.)  
 Missoula Public Library (R.E.A.D.)  
 Monforton School / Bozeman (R.E.A.D.)  
 Morningstar Elementary (R.E.A.D.) / Bozeman  
 Mountain View Care Center / Bozeman  
 Parkhaven Retirement / Bozeman  
 Quaw-Heck School (R.E.A.D.)  
 REACH Homes for Developmentally Disabled Adults / Bozeman  
 RidgeView School (R.E.A.D.) / Belgrade  
 Riverside Assisted Living  
 Shields Valley Elementary / Willsal (R.E.A.D.)  
 Sourdough Montessori (R.E.A.D.)  
 Spring Creek / Bozeman  
 Springmeadows Assisted Living / Bozeman  
 Whittier Elementary (R.E.A.D.) / Bozeman

### MONTANA – HELENA AREA

St. Peter's Hospital Behavioral Health Unit, Helena  
 Masonic Home Assisted Living, Helena  
 Touchmark on Saddle Drive Assisted Living, Helena  
 Bryant School, Helena (R.E.A.D.)  
 Shodair Children's Hospital, Helena (R.E.A.D.)  
 Broadwater School, Helena (R.E.A.D.)  
 Radley School, East Helena (R.E.A.D.)  
 Eastgate School, East Helena (R.E.A.D.)  
 East Valley Middle School, East Helena (R.E.A.D.)

### IDAHO

3B Juvenile Detention Center / Idaho Falls  
 Bridgeview Estates (long-term care center) / Twin Falls  
 Cassia Regional Medical Center / Burley  
 District 93 Schools (special presentations grades 9-12) / Idaho Falls  
 Eastern Idaho Regional Medical Center (EIRMC) / Idaho Falls  
 EIRMC Behavioral Health Center / Idaho Falls  
 Fairwinds - Stone Creek (assisted living) / Idaho Falls  
 Falls Valley Elementary (presentations grades 1-6) / Idaho Falls  
 Hansen Public Library (R.E.A.D.)  
 Harwood Elementary (R.E.A.D.)  
 Jefferson Elementary (R.E.A.D.)  
 Larsen-Saint Public Library / Preston (R.E.A.D.)  
 Morning Star Senior Living / Idaho Falls  
 Riverside Services Group (adult day center for handicapped adults) / Idaho Falls  
 Snake River Juvenile Detention Center / Twin Falls  
 Southern Idaho Learning Center / Twin Falls  
 Twin Falls Public Library (R.E.A.D.)

### KENTUCKY/OHIO

Hospice of Hope / Maysville  
 Mason County Detention Center  
 Maysville Nursing and Rehabilitation Facility  
 Ohio Valley Manor / Ripley  
 Pioneer Trace (nursing home) / Flemingsburg  
 Women's Crisis Center (Domestic violence shelter) / Maysville

**P.O.O.P. bags DELIVERED on your schedule! \$5 gift to us with each delivery!**

# P.O.O.P

PROTECT OUR ONLY PLANET™

[www.ProtectOurOnlyPlanet.com](http://www.ProtectOurOnlyPlanet.com)

**Never run out of P.O.O.P bags!**

- "Eco-Friendly" Corn Starch Bags
- 180 bags per delivery
- FREE Shipping!

**We have Pet Probiotic!**  
 For a healthy, living immune system. Check it out!

# The Facilities and Programs We Serve

Intermountain Therapy Animals team volunteers are currently participating in animal-assisted interactions (AAT or AAA), including R.E.A.D. programs, at the following facilities:

## UTAH – SALT LAKE AREA

Alta View Hospital / Sandy  
Anderson-Foothill Library / SLC (R.E.A.D.)  
Arlington Hills (nursing care) / SLC  
Atria Senior Living / SLC  
Avenues Courtyard (assisted living) / SLC  
Benchmark Hospital / Woods Cross (Adolescents in Residential Treatment Program for Drugs and Violence and R.E.A.D. program)  
Bonneville Jr. High (Special Education)  
Boys & Girls Club / Midvale Elementary (R.E.A.D.)  
Canyon Creek Assisted Living / Sandy  
Canyon Rim Academy / SLC (R.E.A.D.)  
Canyon Rim Care Center (short- and long-term care)  
Care Source Residence (Hospice care)  
Carrington Court (Memory Care)  
Children's Center / SLC (Treatment Center)  
Chateau Brickyard / SLC  
Columbus Community Center / SLC  
Compass Rehabilitation (Short Term Rehab)  
Copper Hills Youth Center / West Jordan (residential treatment)  
Copperview Elementary / SLC (R.E.A.D.)  
Cosgriff Elementary / SLC (R.E.A.D.)  
Coltonwood Place Senior Living (Assisted Living)  
Crossland Rehabilitation / SLC  
Country Life Care Center / SLC  
Emeritus Memory Care / SLC  
Garden Terrace / SLC  
HealthSouth Rehabilitation Hospital / Sandy (Long-term Rehabilitation)  
Highland Care Center / SLC (Senior Care)  
Highland Cove Retirement Community / SLC  
Highland Ridge Hospital (Addiction Recovery)  
Hillcrest Care Center / Sandy (Senior Care)  
Holy Cross Ministries (R.E.A.D.)  
Hope Center for Children / SLC  
Huntsman Cancer Institute  
Inn on Barton Creek (Memory Care) / Bountiful  
Inspiration Hospice  
Intermountain Medical Center / Murray  
Jackson Elementary / SLC (R.E.A.D.)  
Jordan Valley Hospital / West Jordan (Med Surg)  
Juvenile Justice Services / SLC (Observation & Assessment)  
King's English Bookshop / SLC  
La Europa Academy - Girls' Residential Treatment / SLC  
Lakeview Hospital / Bountiful (Senior Psych Unit)  
LDS Hospital (IHC) / Rehabilitation Services  
Learning Services / Riverton (Adult Males with Longterm Disabilities)  
Legacy House Assisted Living of South Jordan  
Lifelong Learning Center (Care for adults with special needs)  
Millcreek Center Library (R.E.A.D.)  
Millcreek Retirement (Assisted living)  
Mt. Olympus Rehabilitation / SLC (Rehabilitation Services)  
Murray Library (R.E.A.D.)  
Neighborhood House (Senior day care) / SLC  
Neighborhood House / Riverside  
Observation & Assessment, Boys' Unit / Salt Lake City (Adolescents in juvenile detention)  
Observation & Assessment, Girls' Unit / Salt Lake City (Adolescents in juvenile detention)  
Paramount Health & Rehab  
ParkLane Senior Apts. / SLC (retirement housing)  
Pioneer Valley Hospital / WVC  
Primary Children's Hospital (IHC) / SLC (Inpatient Rehabilitation Services)  
Primary Children's Residential Treatment Center (IHC) / SLC (Children With Emotional and Abuse Issues and R.E.A.D.)  
Riverton Library / Riverton (R.E.A.D.)

RISE Services (Afterschool program for special needs)  
Rocky Mountain Care / Riverton (Seniors)  
Ronald McDonald House / Salt Lake City  
Salt Lake City Libraries / SLC (R.E.A.D.)  
Salt Lake County Libraries (R.E.A.D.)  
Salt Lake County Youth Services  
Salt Lake Regional Medical Center / SLC  
Salt Lake County Youth Services & REACH Program  
Sandy City Library (R.E.A.D.)  
Sarah Daft Home (Assisted Living)  
Shriner's Hospital for Children / Salt Lake City (Children Undergoing Orthopedic Procedures)  
South Davis Community Hospital / Bountiful (Long- and Short-term Rehab)  
South Valley Sanctuary / West Jordan (Woman & Child Center)  
Spring Creek Healthcare Center (Skilled Nursing Facility)  
St. Mark's Hospital  
Tyler Library / Sandy (R.E.A.D.)  
Union Middle School / Sandy (R.E.A.D.)  
University of Utah University Hospital (Rehab Services, Burn ICU, MedPsych Unit and Surgical Waiting Room)

Behavioral Health Institute / Ogden (Acute Care and Day Treatment)  
Canyon View School LIFE Program / Ogden  
Centro de la Familia / Providence (Center for families)  
Chancellor Gardens / Clearfield (Assisted Living)  
Christmas Box House (Children in care of state services) / Ogden  
Clearfield Elementary (R.E.A.D.)  
Coalville Library (R.E.A.D.)  
Country Pines Retirement / Ogden  
Crestwood Care Center / Ogden  
Davis Behavioral Health - Crisis Recovery Unit / Layton  
Dee Elementary / Ogden (R.E.A.D.)  
Deseret Health & Rehab  
H. Guy Child Elementary (R.E.A.D.) / Ogden  
Edith Bowen Laboratory School, Utah State University / Logan (R.E.A.D.)  
Emeritus Estates Assisted Living / Ogden  
Farr West Elementary (R.E.A.D.)  
Gardens Assisted Living / Ogden  
George E. Wahlen Veterans Home / Ogden  
Heart-N-Home Assisted Living  
Heritage Park Care Center / Roy (Alzheimer's Patients)

Waterfall Canyon Academy / Ogden (students with cognitive disabilities)  
Weber County Library / Ogden (R.E.A.D.)  
Weber Valley Detention Center / Ogden  
Willard Elementary / Willard (R.E.A.D.)  
Willow Glan Health & Rehab / Brigham City

## UTAH – UTAH VALLEY AREA

Alpine Valley Care Center  
American Fork Hospital  
Beehive Homes of Lehi (Assisted living)  
Center for Change / Orem (Eating disorders)  
Courtyard at Jamestown / Provo  
Golden Living / Orem (Senior care)  
Orem Library (R.E.A.D.)  
Park Place of Pleasant Grove (Assisted living)  
Summerfield Manor / Orem (Assisted living)  
Utah Valley Regional Medical Center / Provo  
Valley View Elementary / Provo (R.E.A.D.)

## SOUTHERN UTAH – ST. GEORGE & CEDAR CITY

Beehive - Coral Canyon  
Beehive - Hurricane  
Beehive - River Road  
Beehive - Tonaquint  
Cliff View Senior Living Center  
Emerald Point / Cedar City  
Hurricane Rehabilitation Center  
IHC - Dixie Regional Medical Center  
IHC - Valley View Medical Center / Cedar City  
Kolob Care & Rehabilitation - Legacy Center  
Kolob Care & Rehabilitation / Cedar City  
Red Cliffs Rehabilitation Center  
Rocky Mountain Hospice / St. George  
Rose Crest Manor  
St. George Care and Rehabilitation Center  
Washington County Detention Center  
Washington County Libraries

## MONTANA – BOZEMAN & BELGRADE AREA

Absarokee Elementary (R.E.A.D.)  
Aspen Pointe / Bozeman  
Bear Creek Respite / Bozeman  
Belgrade Public Library (R.E.A.D.)  
Big Sky Ski Patrol / Big Sky  
Big Sky Youth Center / Bozeman  
Birchwood Retirement / Bozeman  
Bozeman Deaconess Hospital (cancer treatment center, dialysis unit and surgical waiting room)  
Bozeman Health & Rehab / Bozeman (Retirement, re-hab)  
Bozeman Lodge (Retirement)  
Bozeman Public Library (R.E.A.D.)  
Chief Joseph Jr. High School / Bozeman  
Churchill Retirement Home / Manhattan  
Eagle Mount Camp / Bozeman  
Edgewood Vista (Retirement)  
Emily Dickinson Elementary (R.E.A.D.) / Bozeman  
Epicenter / Bozeman  
Gallatin County Health Dept. / Bozeman (immunization clinics for kids)  
Gallatin Gateway School (R.E.A.D.)  
Gallatin County Rest Home / Bozeman  
Hawthorne Elementary School (R.E.A.D.)  
Head Start (R.E.A.D. programs)  
Heck-Quaw Elementary School (R.E.A.D.) / Belgrade  
Highgate / Bozeman (retirement home)



*Roxie the Blue Heeler enjoys relaxing while listening with her R.E.A.D.® kids!*

University of Utah Neuropsychiatric Institute (Adult and Child Units)  
Utah Cancer Specialists / SLC  
Utah School for the Deaf & Blind / Connor Street (Children With Multiple Disabilities)  
Veterans Administration Medical Center / SLC (Rehabilitation/Hospice/Care Center)  
The Wentworth at East Millcreek  
Willow Wood Care Center (Assisted Living)  
Youth Care (Residential Treatment Center for Youth)

## UTAH – PARK CITY AREA

Jeremy Ranch Elementary (R.E.A.D.)  
Old Mill Elementary School / Heber (R.E.A.D.)  
Park City Medical Center  
Parley's Park Elementary (R.E.A.D.)  
Peace House  
Park City High School (Special Education)  
Park City Library (R.E.A.D.)  
Park City Medical Center  
Peace House  
Rocky Mountain Care Center / Heber  
Summit County Library (R.E.A.D.)  
Trailside Elementary (R.E.A.D.)

## UTAH – OGDEN / LOGAN

Archway Youth Service Center / Ogden  
Aspen Care Center / Ogden (Assisted Living)

Highland Park Elementary / Clearfield (R.E.A.D.)  
Holt Elementary School / Clearfield (R.E.A.D.)  
Legacy Village of Layton  
Logan Nursing & Rehab / Logan  
Logan Regional Hospital / Logan  
Lomond View Elementary (R.E.A.D.)  
Manor Care / Ogden  
McKay-Dee Hospital (IHC) / Ogden (Transitional Care, Psychiatric, Oasis Program and Rehabilitation Units)  
Mount Ogden Junior High / Ogden  
Mountain Ridge Assisted Living / Ogden  
Mountain View Health Services / Ogden  
Mountainside Elementary / Mendon (R.E.A.D.)  
North Ogden Jr. High (R.E.A.D.)  
North Park Elementary (R.E.A.D.) / Roy  
Ogden Regional Medical Center  
Pioneer Elementary (R.E.A.D.)  
Polk Elementary (R.E.A.D.)  
Pheasant View Assisted Living Center  
Rocky Mountain Care / Clearfield (Assisted Living)  
Taylor Canyon Elementary / Ogden (R.E.A.D.)  
Thatcher Brook Rehabilitation  
Utah Schools for the Deaf & Blind / Ogden (Children with Multiple Disabilities)  
Vista Care Hospice / Ogden  
Wasatch Care Center / Ogden  
Wasatch Elementary / Ogden (R.E.A.D.)  
Washington Terrace Elementary / Ogden (R.E.A.D.)

(Continued on page 22)

**ITA** INTERMOUNTAIN  
THERAPY ANIMALS  
4050 SOUTH 2700 EAST  
SALT LAKE CITY, UT 84124

Nonprofit Org.  
U.S. Postage  
PAID  
Salt Lake City,  
UT  
Permit #549

**CHANGE SERVICE REQUESTED**



N O N • P R O F I T

**Please patronize our ITA Sponsors!**



***"If you're prone to food comas,  
designate a driver!"***

**Monday-Saturday 11 am to 9 pm**

**Closed Sunday**

**307 West 600 South**

**Salt Lake City**

**801.364.0443**

**[www.randrbbq.net](http://www.randrbbq.net)**



**2055 Creek Road**

**Sandy, UT 84093**

**801.942.0777**

**[www.willowcreekpet.com](http://www.willowcreekpet.com)**

**UNA** UTAH  
NONPROFITS  
ASSOCIATION  
SERVING UTAH'S CHARITABLE COMMUNITY

*ITA is a member of the Utah Nonprofits Association. We were in the first tier of organizations that accepted the UNA's Standards of Ethics for Nonprofits in 2002, and, through ITA Board resolutions, we have been recertified every year since then.*

*If you would like to know more about the Standards of Ethics and what they mean in ITA's practices, please call Executive Director Kathy Klotz at any time and she will be happy to tell you all about it.*

